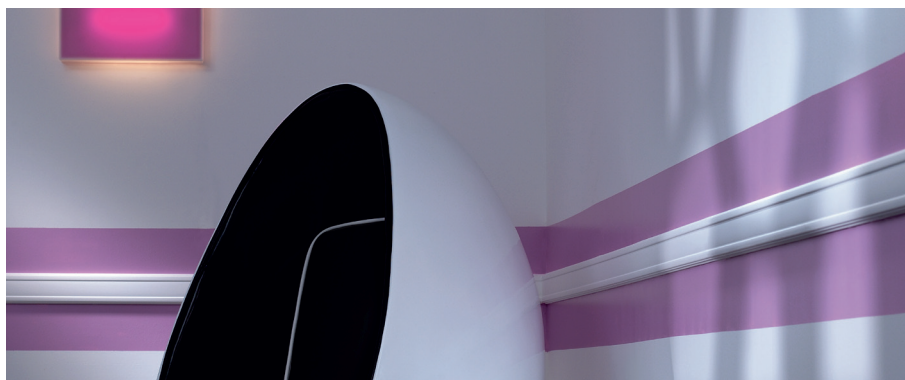
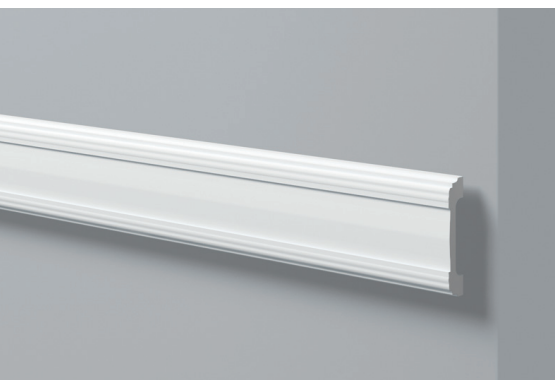


# WALLSTYL® Baseboards, Chair rails & Mouldings



## 1. MATERIAL

### Product name:

WALLSTYL® baseboards, chair rails & mouldings.

### Constituent material:

Extruded polystyrene; fine and closed-cell, white, homogeneous foam.

### Density:

Baseboards: approx. 350 kg/m<sup>3</sup>.

Chair rails: approx. 300 kg/m<sup>3</sup>.

Mouldings: approx. 220 kg/m<sup>3</sup>.

## 2. SPECIFIC PROPERTIES

### Visible surfaces:

Perfectly smooth surface with clean ends, coated in a white acrylic primer paint.

### Gluing surfaces:

Resistant surfaces with clean ends. Grooved on the back for better adhesion to the glue.



NMC sa reserves the right to update the product line or its technical features to the state-of-the-art technology anytime and without previous announcement. All given information is to the best of our knowledge. If you have any questions concerning technical details please contact the NMC sa information service. Any partial reproduction or reprint shall require our explicit approval.

**NMC sa**  
Gert-Noël-Straße - B-4731 Eynatten - Belgien  
Tel.: +32 87 85 85 00  
Fax: +32 87 85 85 11  
E-Mail: info@nmc.eu

[www.nmc.eu](http://www.nmc.eu)



# WALLSTYL® Baseboards, Chair rails & Mouldings



## Dimensions:

- Length of a baseboard: 2m / 6.56ft and/or 2.44m / 8ft (tolerance  $\pm 5$ mm)
- Length of a chair rail: 2 m / 6.56ft and/or 2.44 m / 8 ft (tolerance  $\pm 5$  mm).
- Length of a moulding: 2m / 6.56ft (tolerance  $\pm 5$  mm).

## 3. USE

### Fitting and storage conditions:

For the best result, the product will be fitted and stored in conditions close to those of final use (similar temperature and humidity). Fitting on a wet backing surface (fresh plaster) and in forced drying conditions (heat gun, dehumidifier, exceptionally high temperature) are to be ruled out.

### Backing:

The following backing surfaces are suitable: indoor plastered surfaces, coated plaster.

Surfaces must be clean, dry, free from dust, degreased and flat; rough down if necessary. If the product is to be applied to particular backing surfaces, please consult our technical department.

### Tools:

HDPS-PU saw and NMC VARIO, VARIO PLUS or AD mitre-box.

### Adhesive and joints:

- Apply ADEFIX® adhesive liberally to the gluing surfaces with an applicator gun (cartridge) or spatula. Then place the decorative element onto the substrate and press. Use ADEFIX® adhesive for smaller WALLSTYL® coving edges and joints. Wipe away surplus adhesive with a spatula or wet sponge. Use ADEFIX® PLUS adhesive for WALLSTYL® coving edges and joints from 10 cm height/projection and finish with ADEFIX® (see installation instructions). Prop up if needed.
- Width of joints: between the individual profiles approx. 2-3 mm.
- Application temperature: +5°C to +35°C
- Cleaning product (before hardening): water

### Surface work:

WALLSTYL® profiles can be painted, without any problem, with solvent-free paints (e.g.: dispersion paints, acrylic lacquers, etc.) If, however, you wish to apply a solvent paint, it is advisable to test it.

# WALLSTYL® Baseboards, Chair rails & Mouldings



## 4. SPECIAL INSTRUCTIONS

### Regulations concerning dangerous substances:

WALLSTYL® polystyrene products are to be classified neither under "very toxic" nor under "toxic", according to the regulations concerning dangerous substances.

### Important notes:

The elements are strictly decorative to the exclusion of any structural function; they are not designed to withstand loads and should be isolated by flexible joints from elements likely to convey strains or movements.

These products are flexible. However, excessive pressure may cause the product to snap. Please note that a break may lead to the projection of debris.